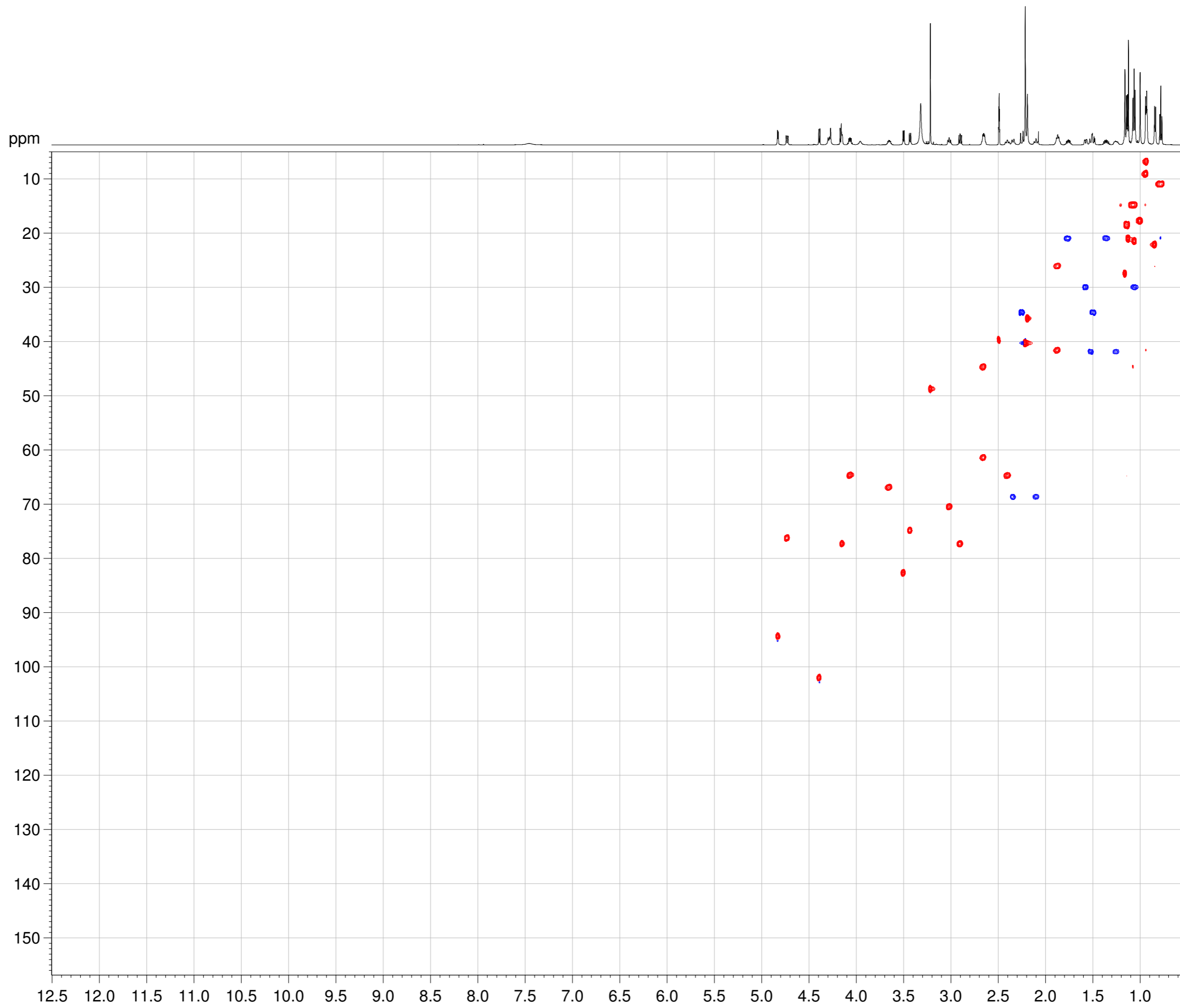


NAME AZI\_DEMO\_2013-10-01\_9  
EXPNO 13  
PROCNO 1  
Date\_ 20131002  
Time 7.44  
INSTRUM egb600  
PROBHD 5 mm PABBI 1H/  
PULPROG hsqcedetgpsisp.2  
TD 2048  
SOLVENT DMSO  
NS 4  
DS 16  
SWH 9014.423 Hz  
FIDRES 4.401574 Hz  
AQ 0.1136457 sec  
RG 90.5  
DW 55.467 usec  
DE 6.50 usec  
TE 298.4 K  
CNST2 140.0000000  
CNST17 -0.5000000  
DO 0.0000300 sec  
D1 1.5000000 sec  
D4 0.00178571 sec  
D11 0.03000000 sec  
D16 0.00020000 sec  
D21 0.00357143 sec  
D24 0.00089286 sec  
IN0 0.00001840 sec

==== CHANNEL f1 =====  
NUC1 1H  
P1 9.65 usec  
P2 19.30 usec  
P28 1.00 usec  
PL1 0.30 dB  
PL1W 14.76864147 W  
SFO1 600.1342009 MHz

==== CHANNEL f2 =====  
CPDPRG2 garp  
NUC2 13C  
P3 16.38 usec  
P4 500.00 usec  
P24 2000.00 usec  
PCPD2 65.00 usec  
PL0 120.00 dB  
PL2 -1.00 dB  
PL12 10.97 dB  
PL0W 0.00000000 W  
PL2W 113.84199524 W  
PL12W 7.23273373 W  
SFO2 150.9156357 MHz  
SP3 2.88 dB  
SP7 2.88 dB  
SPNAM3 Crp60,0.5,20.1  
SPNAM7 Crp60comp.4  
SFOAL3 0.500  
SFOAL7 0.500  
SPOFFS3 0.00 Hz  
SPOFFS7 0.00 Hz

==== GRADIENT CHANNEL =====  
GNAM1 SINE.100  
GNAM2 SINE.100  
GPZ1 80.00 %  
GPZ2 20.10 %  
F16 1000.00 usec  
ND0 2  
TD 256  
SFO1 150.9156 MHz  
FIDRES 106.112556 Hz  
SW 180.000 ppm  
FnMODE Echo-Antiecho  
SI 2048  
SF 600.1300114 MHz  
WDW QSINE  
SSB 2  
LB 0.00 Hz  
GB 0  
PC 1.40  
SI 1024  
MC2 echo-antiecho  
SF 150.9028837 MHz  
WDW QSINE  
SSB 2  
LB 0.00 Hz  
GB 0



chemist  
AZITHROMYCIN  
project

