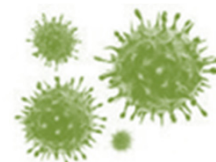
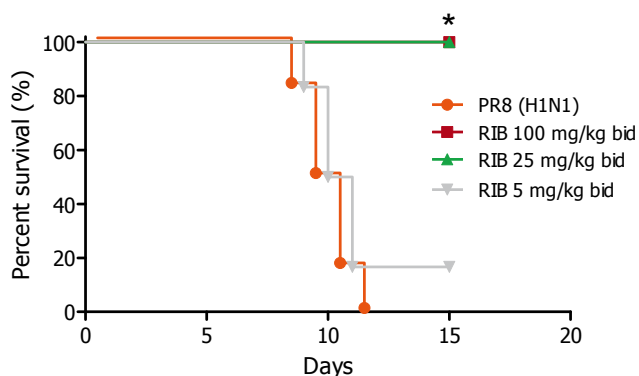


## Mouse model of infection induced by Influenza A virus (Puerto Rico/8/1934(H1N1))

- BALB/c mice are orally treated with Ribavirin for 5 days, starting 4 hours prior to infection with PR8 (H1N1) via intranasal inoculation
- Read-outs:
  - survival rate
  - viral load in lung tissue
  - concentration of cytokines in lung tissue

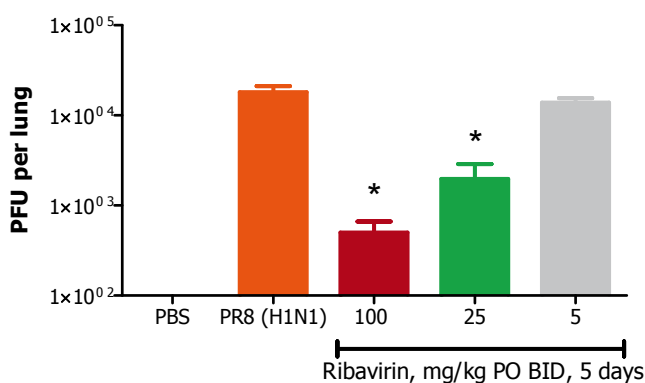


**Influenza A virus infection  
Survival rate (%)**



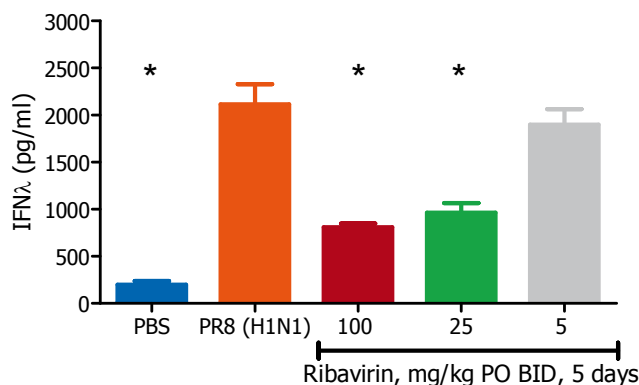
\*p<0.05 vs. PR8 (H1N1); Log-rank (Mantel-Cox) Test

**Influenza A virus infection  
Viral load in lung tissue (mean±SEM)**



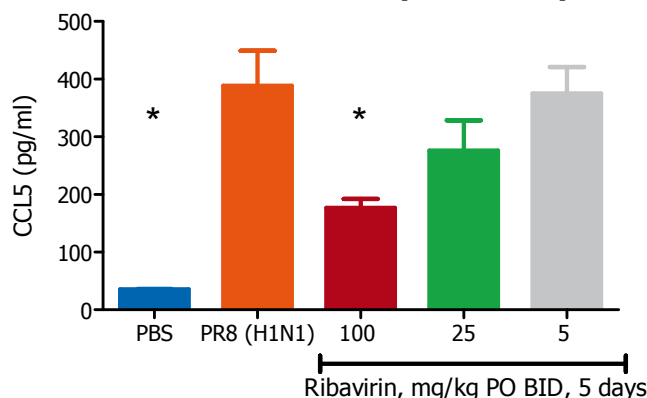
\*p<0.05 vs. PR8 (H1N1); Mann Whitney test

**Influenza A virus infection  
IFNλ in BALF (mean±SEM)**



\*p<0.05 vs. PR8 (H1N1); Mann Whitney test

**Influenza A virus infection  
CCL5 in BALF (mean±SEM)**



\*p<0.05 vs. PR8 (H1N1); Mann Whitney test